

# eMobility & the EPBD

## Fact Sheet

The Energy Performance of Building Directive (EPBD) has these objectives:

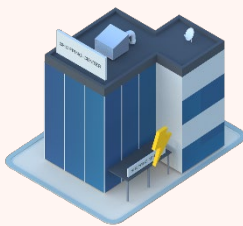
- > Achieve a highly energy efficient and decarbonised building stock by 2050
- > Create a stable environment for investment decisions
- > Enable consumers and businesses to make more informed choices to save energy and money

An EU directive defines the goal that all EU countries must achieve, although how the countries achieve these goals can be determined by the individual country.<sup>1</sup>



The EPBD outlines that people should be able to charge where they live and work.<sup>2</sup>

- > The EPBD identifies two main categories of buildings:
  - > Non-residential (e.g. office-, retail- buildings) and residential.
- > General requirements for electric vehicle charging in residential & non-residential buildings:
  - > Smart charging for all charging points (bi-directional where appropriate)
  - > Remove regulatory barriers, improve permitting and approval process



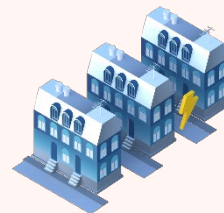
### Non-Residential

New non-residential buildings and buildings under major renovation with **more than 5 parking spaces**:

- > Minimum 1 charging point
- > Office buildings: minimum 1 charging point per 2 parking spaces
- > Pre-cabling for all parking spaces

Existing non-residential buildings with **more than 20 parking spaces**:

- > At least 1 charging point for every 10 parking spaces by 2027
- > Buildings owned or occupied by public authorities must have pre-cabling for at least 1 in 2 parking spaces by 2033



### Residential

New residential buildings + residential buildings undergoing major renovation with more than 3 parking spaces:

- > Pre-cabling for all parking spaces

Existing residential buildings

- > 'Right to plug' - member states should remove obstacles that hinder the installation of a charging point



Caverion is a leading installation and maintenance provider of electric vehicle charging solutions and their integration with building and energy management systems.



[caverion.com/contact](https://caverion.com/contact)

